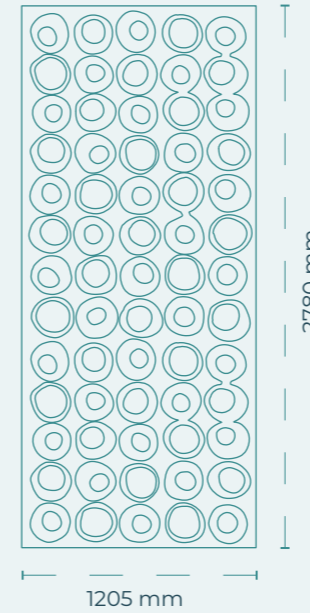
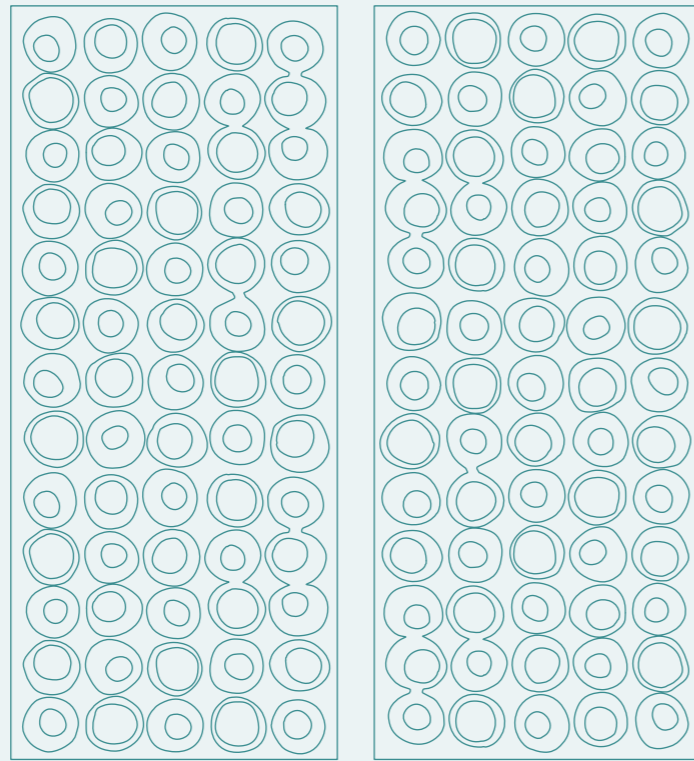




# MOON PHASES



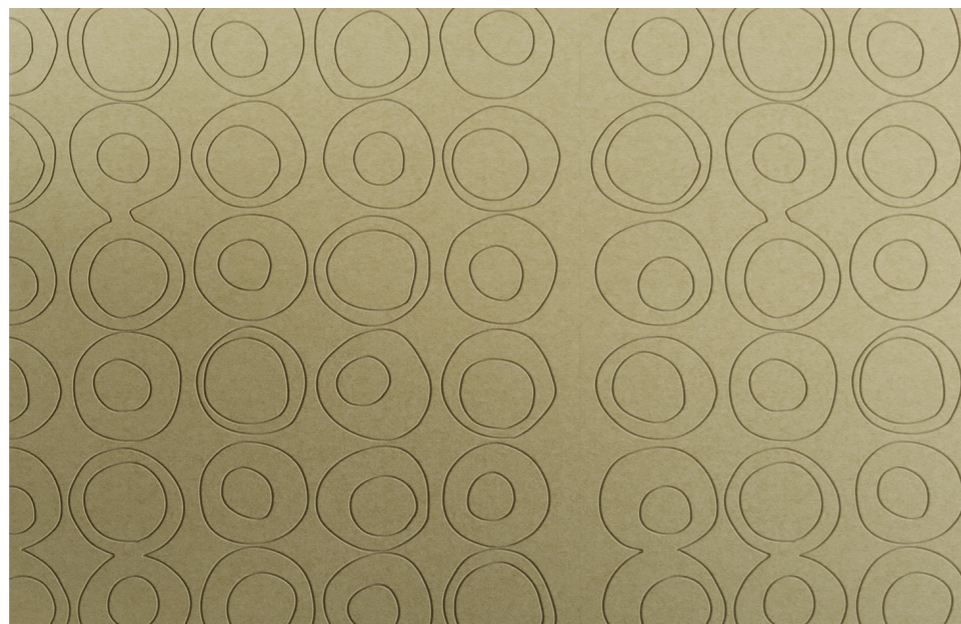
### SPECIFICATIONS

SKU	DBHA0013
Dimensions	1205 x 2780 mm
Density - Grammage	2400 g/m <sup>2</sup> - 200 Kg/m <sup>3</sup>
Thickness	12 mm
Sound Absorption	0.9 αW - 0.8 NRC
Fire Rating	ASTM E84 Class A, EN 13501, Bs1-d0
Composition	100% Polyester fibre (PET)
Recycled Content	Minimum 75%
Emissions	E0-Indoor use, OEKO-TEXT®, VOC's free
Application	Walls
Tooling	V-Cut

### Designer Clara Sullà



Indulge in serenity with Moon Phases inspired by rhythmic lunar cycles. Elevate interiors with timeless elegance and comfort. Choose from serene neutral colours, and consider multiplying the design for a touch of sophisticated personality.



### Colours

