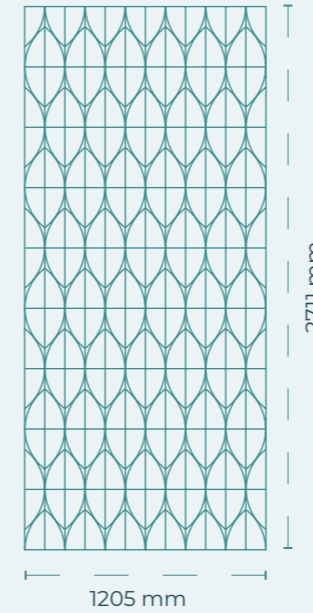
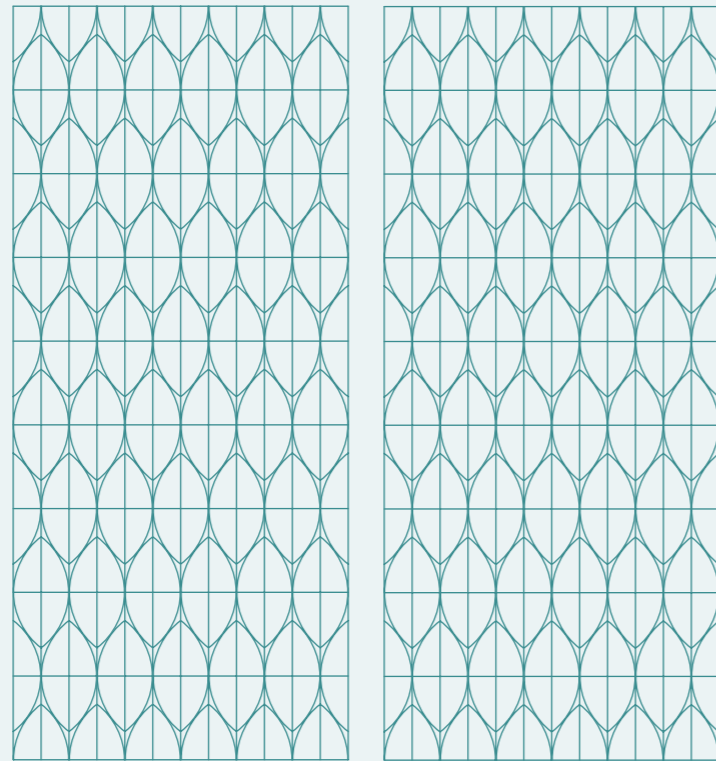




LAUREL

harmonium.design



SPECIFICATIONS

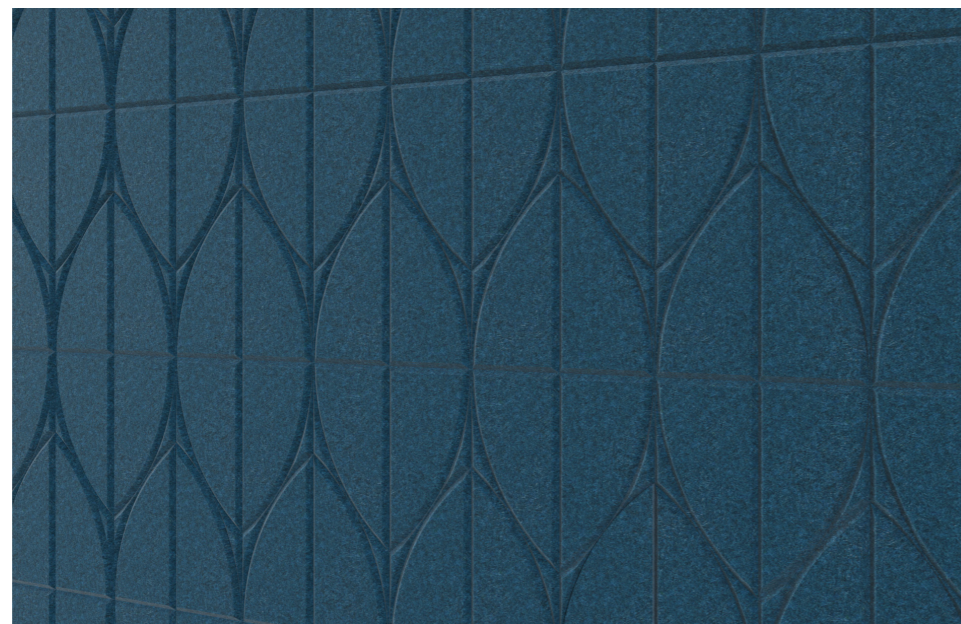
SKU	DBHA0008
Dimensions	1205 x 2711 mm
Density - Grammage	2400 g/m ² - 200 Kg/m ³
Thickness	12 mm
Sound Absorption	0.9 αW - 0.8 NRC
Fire Rating	ASTM E84 Class A, EN 13501, Bs1-d0
Composition	100% Polyester fibre (PET)
Recycled Content	Minimum 75%
Emisions	E0-Indoor use, OEKO-TEXT®, VOC's free
Application	Walls
Tooling	V-Cut

Designer

Laura Junco Cañedo



With its geometric shapes inspired by the Laurel tree, this design combined along a wall simulates a continuous wall of leaves. Thanks to its symmetry, it can be scaled in all directions to control the noise level of the space.



Colours

